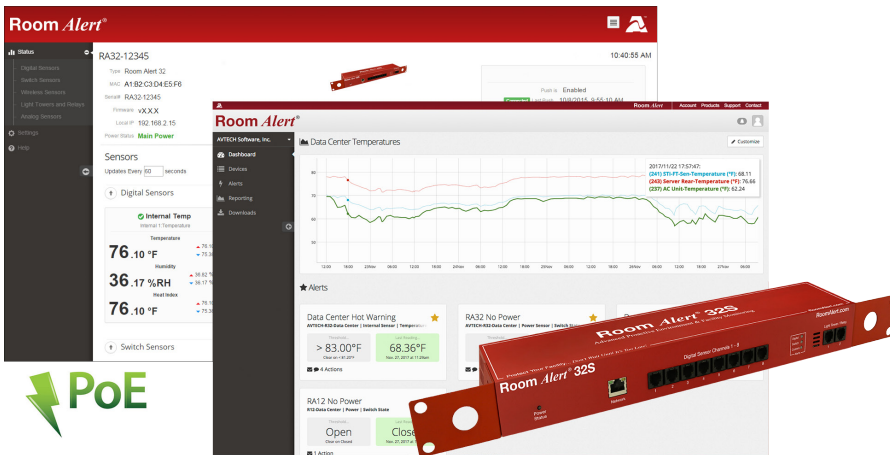


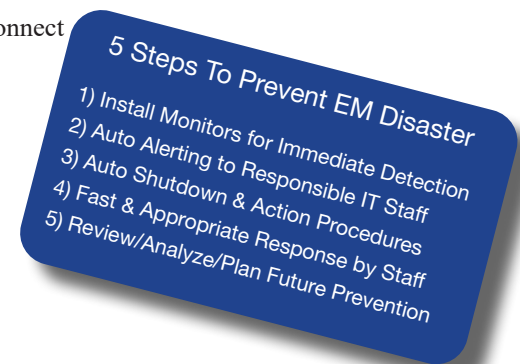
# Room Alert® 32S

*“Advanced Physical Environment Monitoring,  
Alerting & Automatic Corrective Action.”*



## Our Most Advanced, Most Secure & Highest Capacity Room Alert

- Secure data transfer options include HTTPS / SSL Web Interface, SSL / TLS Email Support, SNMP v1/v2c/v3, 2048-bit encryption and SSL Push to Room Alert Account.
- Easy Ethernet ‘Plug & Play’ setup for immediate IT & facilities environment monitoring.
- Includes built-in sensors for digital temperature, humidity, heat index, dew point and power with “PUSH” technology.
- Includes Power over Ethernet (PoE), a built-in Mini Uninterruptible Power Supply (MUPS), external Digital Temperature & Humidity Sensor, external Digital Temperature Sensor and one free year of Professional Room Alert Account service.
- Includes ports for 8 digital sensors and 16 switch sensors, as well as additional ports to connect 2 0-5V analog sensors, 2 low voltage relays, and 2 Light Tower & Relay Adapters (LTA).
- Offers secure and advanced alerting by email, email-to-SMS, SNMP, JSON, HTTP Post, webpage update and more.
- Use Room Alert 32S’s built-in web server, RoomAlert.com Account, local Room Alert Manager software or SNMP to monitor across your network.
- The Room Alert 32S package allows real-time sensor status, data logging, graphing, advanced alerting, Fahrenheit/Celsius, high/low watermarks and much more.



Manufacturer: AVTECH Software, Inc.

AVT-210915.13

INCLUDES: Room Alert 32S Rack Unit (1U 19”), built-in Digital Temperature Sensor, built-in Digital Humidity Sensor, built-in Heat Index Sensor, built-in Dew Point Sensor, built-in Main Power Sensor, external Digital Temperature/Humidity Sensor (25), external Digital Temperature Sensor (25), 8 external Digital Sensor Ports (RJ-11), 16 Switch Sensor Channels, Power On/Off Button, Factory Reset Button, Power over Ethernet (PoE), LED Sensor Status indicators, built-in Mini Uninterruptible Power Supply (MUPS), rotating mounting wings, PUSH technology, Ethernet Connection (RJ-45), 2 External Light Tower or Relay Adapter (LTA) Ports, 2 Relay Output Ports (0.3A@125VAC / 1A@24VDC), 2 0-5V Analog Sensor Input Ports, 10’ (3.1m) Ethernet cable, 5V Power Adapter (110/240V, RoHS), built-in web server, SNMP Trap & Query enabled, SNMP MIB, downloadable *Room Alert User’s Guide & Reference Manual*, 1 year RoomAlert.com Professional Account upgrade, Room Alert Manager software available on Professional tier or higher, lifetime support, lifetime firmware updates, ‘30-Day Satisfaction Guarantee’. Optional sensors, Light Tower Adapters (LTAs), GSM modem & RoomAlert.com upgrade options available.